

9/20/2017  
Meeting:  
Pines Charter  
NEHS



NEHS

NATIONAL ENGLISH  
HONOR SOCIETY  
*for High Schools*

# Officer Introductions

**Advisor:** Sarah Phelps

**President:** Lindsey Adams

**Vice President:** Alexa Infante

**Secretary:** Ariana Subhit

**Treasurer:** Maia Hunter

**Social Media Coordinator:** Brianna Adan

**Historian:** Alexandra Ruiz

**Creative Director:** Kelen Quintana



# Stay Informed!

- We'll communicate with & update you through **Remind**.
- Remind Code: text the message @ppchsnehs to the number 81010
- If you did not receive an email regarding today's meeting, please see Lindsey after to make sure we have the correct email for you.
- Trello will be also used as a means to communicate donation requests and reading program information.



Stay  
Updated!

- Check our website for updates on events, meetings, and contests
- Learn about upcoming events
  - **Check hours!!!!**
  - Submit pictures
- View meeting powerpoints
  - Contact us

<https://pinescharternehs.wordpress.com/>

**CONTACT US**



→ We have a club email this year!

[pinescharternehs@gmail.com](mailto:pinescharternehs@gmail.com)

- ★ Any questions, concerns, comments can be sent to this email.
- ★ We will also be sending out reminders and updates through this email.



# Member Dues

## Returning Members

- \$10

The money is used...

- to purchase materials for various events throughout the year
- to purchase senior pins at the end of each year
- to lower the cost of this year's NEHS t-shirts

## New Members

- \$20

The money is used...

- to register you as a member of the National English Honor Society (\$10)
- to purchase materials for various events throughout the year
- to lower the cost of this year's NEHS t-shirts

# This year's NEHS Club T-Shirts!

- \$10... since we will cover some of the cost
- Money will be collected during homeroom in D203 until the end of the month.



# Hour Requirements

- ❖ 15 hours required per year for all members
  - For new members, at least 12 of those 15 must be completed by February
    - Help plan and promote events
    - Attend and participate in events such as Recite Night, Poetry Slam, and Poem in your Pocket Day!
    - Join our Reading Program
    - Help to celebrate Banned Books Week!
    - Donate to Children's Harbor (supplies) or to the Reading Program (books/games)
    - General meetings count as an hour
- ❖ Remember, your English GPA must be at a 3.0 or higher

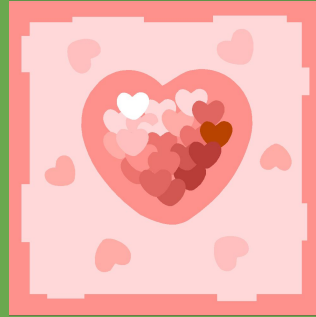


# Reading Program



- ➔ Read weekly with a beginning reader!
- ➔ Be a mentor/role model: make a difference!
- ➔ Strengthen your college application with a long-term commitment
- ➔ Get lots of volunteer hours
  - ◆ Anything beyond your 15 required NEHS hours can go towards your school requirement
  - ◆ Tuesday commitment: regular attendance mandatory
  - ◆ IMMEDIATELY after-school until 2:50 pm
  - ◆ Pines-FSU Elementary campus
  - ◆ Must have reliable transportation
- ➔ If you are interested in learning more about this, see Lindsey and Alexa to fill out a form.

# Children's Harbor Outreach Project



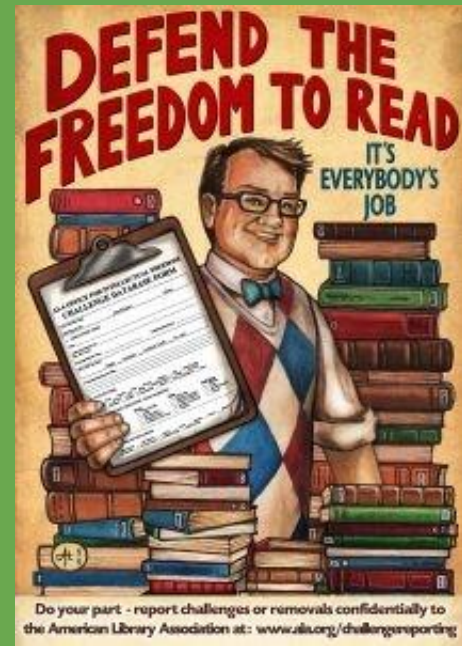
- We're still collecting writing supplies for disadvantaged children
- Next delivery TBA
- Can earn up to 7 volunteer/NEHS hours through donations
- What is needed?
  - bring in spiral notebooks, composition books, packs of lined paper, construction paper, packs of pens and pencils...

# Banned Books Week! Sept. 25-29



- Participate by emailing [pinescharternehs@gmail.com](mailto:pinescharternehs@gmail.com) a document featuring your picture with the book or just the book and a blurb about why you love it even though it is banned/controversial.
- Approved 8.5 x 11 flyers will be posted in D building and on the NEHS blog during the actual Banned Books Week!
- Email submissions due by September 23<sup>rd</sup>.
- Earn 1 NEHS volunteer hour for your contribution!

# Scholarship Opportunity for NEHS Sophomores and Juniors!



## PARTICIPATE IN THE Intellectual Freedom Challenge!

- Write an essay based on a banned book or controversial text!
  - Essays due to Ms. Sarah Phelps by **October 9<sup>th</sup>**
- Each top writer will receive a \$25 gift certificate and \$100.  
(essays selected to become part of the rationale holdings of [National Council of Teachers of English](#) will result in an additional \$150)
- See Ms. Phelps in D203 for further information!

# Enter PPCHS'S PERSONAL NARRATIVE CONTEST

by submitting an original, typed narrative\*

to Ms. Sarah Phelps in D203 by [Friday, October 6<sup>th</sup>](#).

- The winning narrative will represent PPCHS in the 2018 Broward County Literary Fair, as well as...
  - be announced at the 2018 annual NEHS Poetry Slam!
  - receive an invitation to a PPCHS Writer's Toast in April!

## \*GUIDELINES:

Your narrative must...

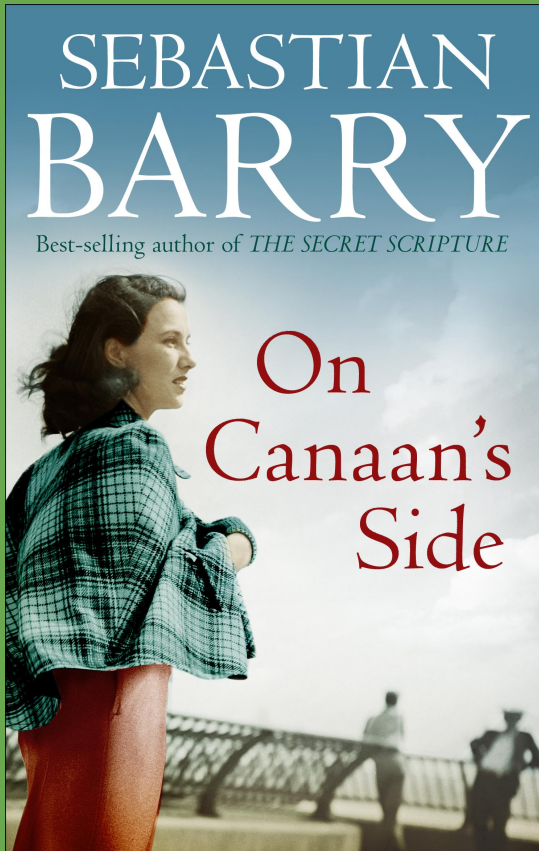
\*provide a true account of an impactful experience or event

\*use first person point of view

\*be 2-4 pages in length, using double-spaced, size 12 Times New Roman font

\*be titled (size 12 Times New Roman font, not underlined)

# Scholarship Money for NEHS Seniors!



- Complete NEHS 2017-18 Common Reader:  
*On Canaan's Side* by Sebastian Barry, published in 2011. It is presented through the voice of Lilly Bere, who "recounts the events of her life as though mesmerized by the vivid incompleteness of a remembered dream" (The Guardian, 2011). Spanning multiple decades from World War I through the Gulf War, the text leads readers to understand not only Lilly and her family, but history, warfare, family, life, and death.

- Submit essay to apply
- Prompts will be posted in November, but read it now!
- Will also be one of Ms. Phelps's independent reading selections



- Visit [poetryoutloud.org](http://poetryoutloud.org) to select poems to perform...
  - at [Recite Night](#) on Dec. 1<sup>st</sup>
  - at this year's [NEHS Poetry Slam](#) on February 7<sup>th</sup>!
- Our school winner goes forward to compete at the state level
- Each winner at the state level will receive \$200 and an all-expenses-paid trip with an adult chaperone to Washington, DC, to compete in the National Finals.
- The National POL finalist is awarded \$20,000!
- Attend informational meeting in D203 during HR on Tues, 9/26



# RECITE NIGHT!

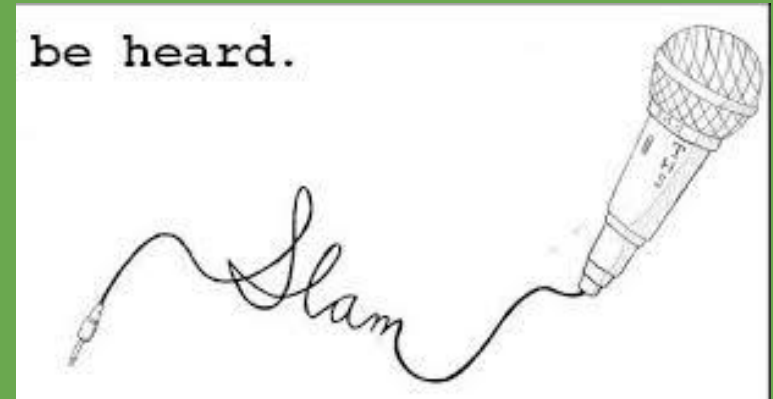
- Opportunity to showcase student talent
- December 1st, 2:15pm
- Ms. Schwab's room
- Starry Night themed
- Recitation only
  - published poetry, speeches, monologues, etc.
- Good practice for Poetry Out Loud Competition





# Annual NEHS 2018 POETRY SLAM!

- Wednesday, February 7<sup>th</sup>
  - 5:00-7:15 pm
  - library auditorium
  - save the date now!!!
- Showcases originally written poetry readings/performances
- Spoken word contest
- Poetry Out Loud Recitation Competition
- Announcement of Literary contest winners
- Participate!
  - as performer
  - as NEHS volunteer
  - Get NEHS hours!

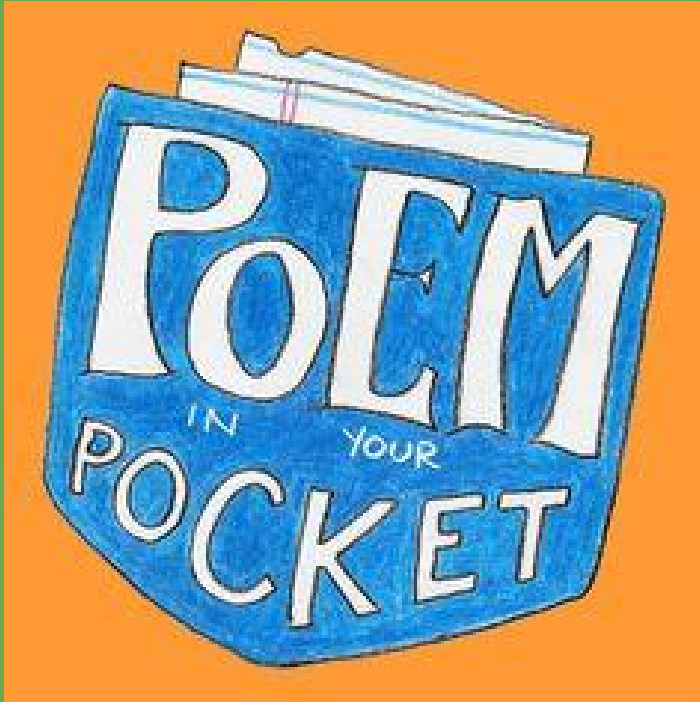


# Induction Ceremony for New Members



- Scheduled for **March 14<sup>th</sup> at 5:30pm** in the library auditorium
- Invitations will be sent to inductees who have completed at least **12** of their **15** NEHS volunteer hour requirement by **February**.
- Ceremony attended only by new inductees and Officers

# Poem in your Pocket Day: April 24th



- ★ “Every April, on Poem in Your Pocket Day, people celebrate by selecting a poem, carrying it with them, and sharing it with others throughout the day at schools, bookstores, libraries, parks, workplaces, and on Twitter using the hashtag #pocketpoem” (poets.org).
- ★ began in 2002 to celebrate New York City’s National Poetry Month celebration
- ★ in 2008 expanded to all 50 states by Academy of American Poets
- ★ Pines Charter NEHS will participate! YOU can contribute by...
  - coming in to D203 to prepare scrolls of poems during spring semester.
  - preparing poem scrolls at home (email [pinescharternehs@gmail.com](mailto:pinescharternehs@gmail.com) for details)
  - distributing poems on April 24th

# Interested in participating in an Elephant Book Exchange?



- Would be open to the whole school
- Holiday themed
- To gain entry, submit a book and get a ticket
- Each book would be wrapped but have a short synopsis on the front
- The day of the exchange everyone is given a number and would have an opportunity to pick a new book
- Similar rules to elephant gift exchange
- Refreshments would be provided
- December 14th?

# Reminders...



- Please make sure you signed in so you can receive your hour
- Check [pinescharternehs.wordpress.com](http://pinescharternehs.wordpress.com) for info
- See Maia and Brianna to pay dues
- Turn in any membership forms to Lindsey
- Sign up for Remind
- Next General Meeting: Thursday, October 12th